

Aventura

Software

“Manufacturing Security Solutions by Design”

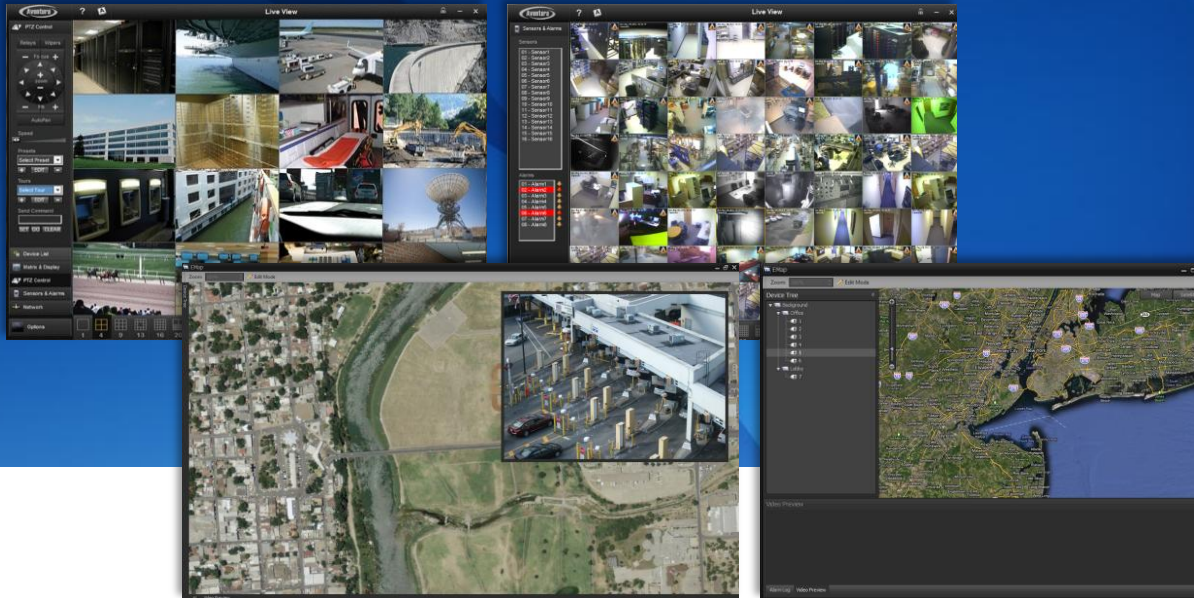


About Aventura



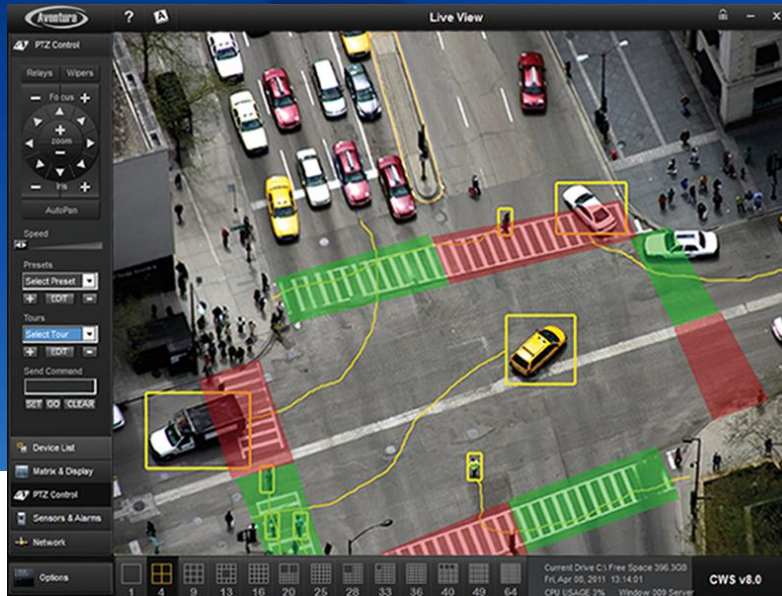
- End-To-End Hardware/Software Solutions/Services
- Designer/Developer/Manufacturer/Integrator
- Mature Enterprise Level Experience For Over a Decade
- Best of Breed Cutting-Edge Technology Made in USA
- Headquartered in New York – Operations Globally Since 2000

Video Management



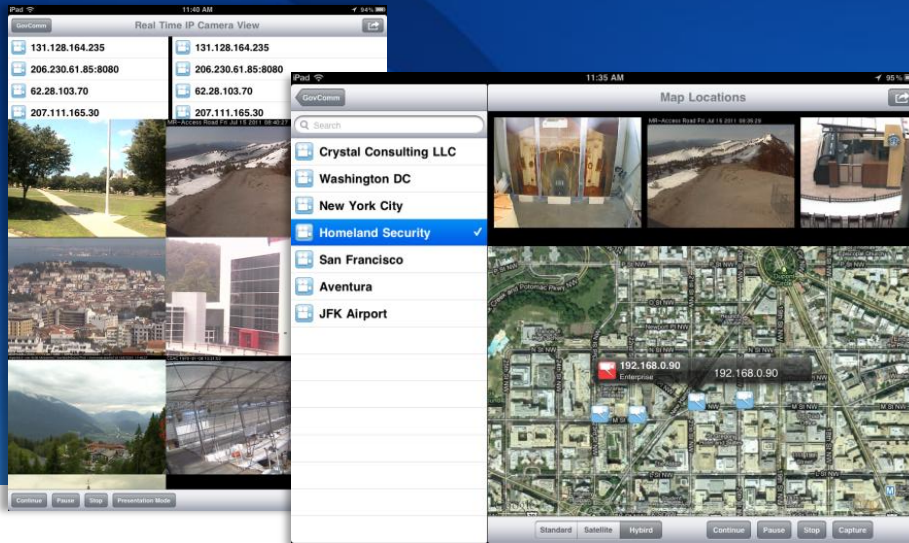
- DVR/NVR Client
- SmartPhone
- Centralized Administration
- Alarm Management
- Web Client
- Advanced Mapping
- Workflow
- Reporting
- Central Station
- Cloud Management

Analytics



- People/Vehicle Counting
- Auto Tracking
- Intrusion Detection
- Left/Removed/Thrown Objects
- Loitering/Crowd Detection
- Trip Wire/Wrong Direction
- Object Detection
- Object Classification
- Object Speed
- Slew To Cue
- Image Stabilization
- Camera Tampering

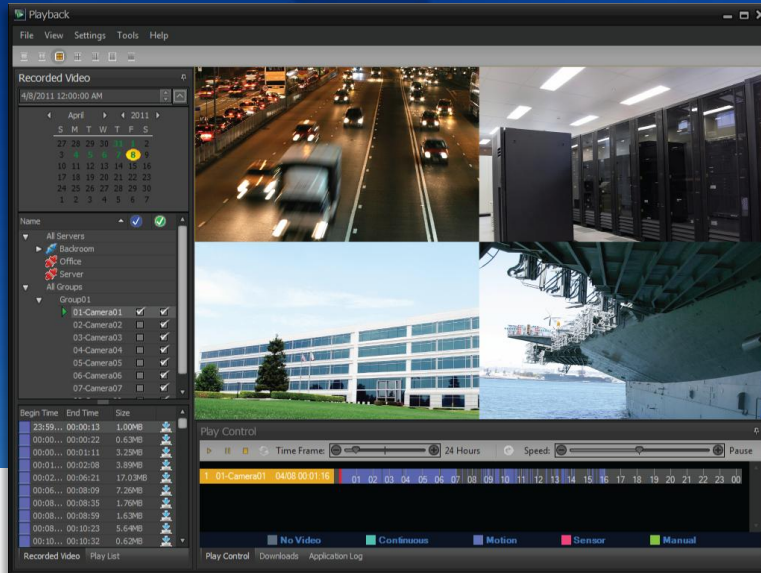
Mass Notification



- VoIP
- Instant Messaging
- Text Messaging
- Group eFax
- eMail Blast
- Social Media
- Radio and Broadcast

- Unified Communications
- Network-Centric
- Cloud-Ready
- Enterprise Class
- Regulatory Compliant
- Accountability
- Command & Control

Command & Control



- Video Management
- Radar
- Unattended Ground Sensors
- Intrusion
- Access Control
- GIS
- Doctrine
- Dispatch
- Communications
- Intelligence
- PSIM
- PSAP

Video Wall



- Hardware Encode/Decode Management
- Multi-Screen Director
- User-Friendly Interface
- Support For BNC, HDMI, DVI, VGA, Composite, S-Video, Ethernet

Vehicle Surveillance



- Onboard Video Management
- Mobile Docking Station
- Automated Download
- Central Management
- Client Workstation
- Real-Time Display & Record
- Live Local & Remote Viewing
- Tracking
- System Diagnostics
- Seamless Wayside Integration

Fiber Management



The screenshot displays the IP Manager software interface with several panels:

- IP Manager Table:**

| IP | MAC address | TCP port |
|---------------|-------------------|----------|
| 192.168.0.180 | 00:14:97:05:9f:c6 | 1003 |
| 192.168.0.181 | | 1003 |
| 192.168.0.182 | | 1003 |
- Device Settings:**
 - COM Settings: 19200
 - Data BR: 8
 - Parity: 0
 - Stop BR: 1
 - Target IP: 192.168.0.100
 - Target Port: 1001
 - Work Port: 1002
 - Work Type: UDP
 - Device Name: Mike
 - IP Information: Gateway 192.168.0.1, IP 192.168.0.180, IP Mode 1, MAC 00:14:97:05:9f:c6, Mask 255.255.255.0
 - Network Settings: Command Port 1003, DNS Server 192.168.0.1, Web Port 192, Password
- Fiber Units Status Table:**

| Fiber Unit # | Version # | Manufacture Date | Part # | Video Channel(s) | Error Channel(s) |
|--------------|-----------|--------------------------|--------|------------------|------------------|
| Slot 1 | 01 | 21 week(s) of years 2010 | | 1 | |
| Slot 2 | | | | | |
| Slot 3 | | | | | |
| Slot 4 | | | | | |
| Slot 5 | | | | | |
| Slot 6 | | | | | |
| Slot 7 | | | | | |
| Slot 8 | | | | | |
| Slot 9 | 01 | 21 week(s) of years 2010 | | | |
| Slot 10 | | | | | |
| Slot 11 | | | | | |
| Slot 12 | | | | | |
| Slot 13 | | | | | |
| Slot 14 | | | | | |
| Slot 15 | | | | | |
- Fiber Units Occupation:** A bar chart showing occupancy for 15 slots. Slots 1 and 9 are occupied (blue bars), while others are empty.
- Device Temperature:** A thermometer icon showing a reading of approximately 45 degrees Celsius.
- Device Status:** A line graph showing IP Manager activity over time.
- Fiber Units Visualization:** A visual representation of the 15 slots, with slots 1 and 9 highlighted in green.

- Enterprise Class
- Remote Device Management
- Unit Visualization
- Alarm Notification
- Failed Port Switching